



**DOWNLOAD THE LATEST
INSTALL MANUALS AT
www.bddiesel.com**



50 STATE LEGAL
CARB EO D-553-3, D-553-4




BD Throttle Sensitivity Booster with Push Button Switch

1057831	Dodge/Jeep
1057832	Dodge/Ford/Jeep
1057836	Chevy/GMC
1057837	Chevy/GMC
1057838	Chevy/GMC/Dodge/Jeep/Fiat/Nissan
1057939	Toyota
1057940	Toyota

See the full application guide at tsb.bddiesel.com for up to date fitment data and for the latest information on CARB emissions compliance testing.

Kit Contents

1301196	1301810	1301810	1301813
			
TSB V2 Module Qty: 1	Push Button Switch Qty: 1	Switch Bracket Qty: 1	Switch Decal Qty: 1
1330052	1330054	1300131	
			
Bracket Screws Qty: 2	Double Sided Tape Qty: 1	Tie Wrap Qty: 6	

Kit 1057831
1331191-4

Wire Harness Qty: 1

Kit 1057832
1331192-4

Wire Harness Qty: 1

Kit 1057836
1331196-4


Wire Harness Qty: 1

Kit 1057837
1331197-4

Wire Harness Qty: 1

Kit 1057838
1331198-4

Wire Harness Qty: 1

Kit 1057839
1331199-4

Wire Harness Qty: 1

Kit 1057840
1331180-4
Wire Harness
Qty: 1

Introduction

Modern vehicles utilize an accelerator pedal position sensor to control engine fueling. Many of these vehicles respond slowly and have poor throttle sensitivity. Much of this is actually caused by the factory programming within the ECM. The BD Throttle Sensitivity Booster corrects this by making the pedal more sensitive and making the vehicle more responsive.

This kit comes with the push button switch which has three sensitivity levels and in addition has both a valet mode and a "ludicrous speed" setting. The valet mode is perfect for modified vehicles as it allows the owner of the vehicle to reduce the available power when allowing others to drive their vehicle.

These settings can be easily changed on the fly with the tap of a button. The ability to change levels on the go is also helpful for driving in inclement road conditions where a lower responsiveness may be desired.

Install Video

Check out tsb.bddiesel.com for installation videos on the Throttle Sensitivity Booster!

BD Diesel Throttle Sensitivity Booster Installation Video



Feature Install of Throttle Sensitivity Booster by Greg Alberalla



Operation

The unit has three normal sensitivity levels, 1-2-3 which are selected by simply pressing the button. When no lights are lit, the throttle sensitivity is turned off, the three sensitivity levels are indicated by the three LEDs.



To activate valet mode, press and hold the button for five seconds. All three LEDs will light up. The module will now limit vehicle power until it is taken back out of valet mode. To turn valet mode off, press and hold for another 5 seconds.



To activate "ludicrous speed" mode, press and hold the button for 10 seconds until all of the LEDs begin flashing. To leave this mode, simply press the button once. This mode will turn off by default on the next start for safety.



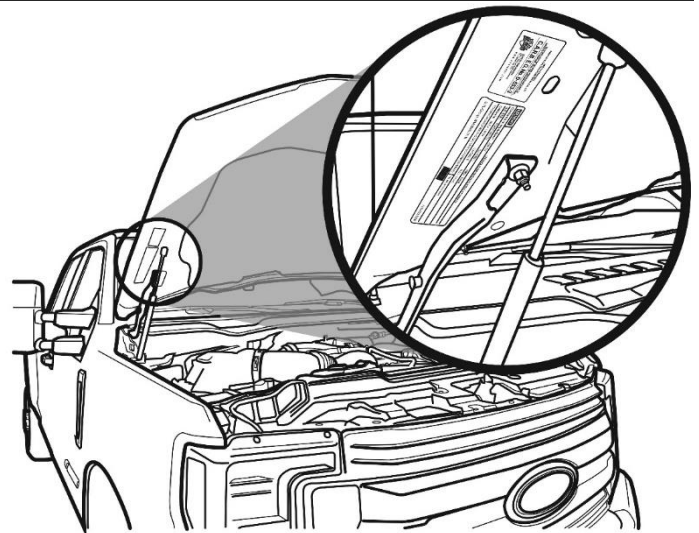
The module will automatically detect if the button is attached. If the external button is disconnected from the module, it will default to the mode selected on the switch inside the module.

CARB Emissions EO# D-553-3, D-553-4

Check out tsb.bddiesel.com for the most up to date CARB compliance data.

Currently the BD TSB is 50 state legal for most gasoline RAM, Dodge, Jeep, Chrysler, Fiat vehicles 2019 and earlier and 05-18 Ford diesel trucks. Check tsb.bddiesel.com for complete list.

Install the supplied CARB EO sticker under the hood next to the vehicles emissions sticker as shown in the graphic. DO NOT install this sticker in any vehicle application other than those listed above!



BD Engine Brake Inc.

Plant Address: 33541 MacLure Rd. Abbotsford, BC, Canada V2S 7W2

U.S. Shipping Address: 1124 Fir Avenue, Blaine, WA 98230 U.S. Mailing Address: P.O. Box 231, Sumas, WA 98295

Phone: 604-853-6096 | Fax: 604-853-8749 | Internet: www.bddiesel.com

Installation

Turn the vehicle off and remove the key. Wait for 5 minutes to ensure the vehicles ECM has powered off completely.

Locate the electrical connector for the throttle pedal and unplug it.

NOTE Many models will have a red or gray lock tab that must be released first.



Connect the BD wiring harness to the pedal and to the factory wiring.

IMPORTANT Secure the wiring with the supplied wire ties and ensure the wires do not interfere with pedal operation.

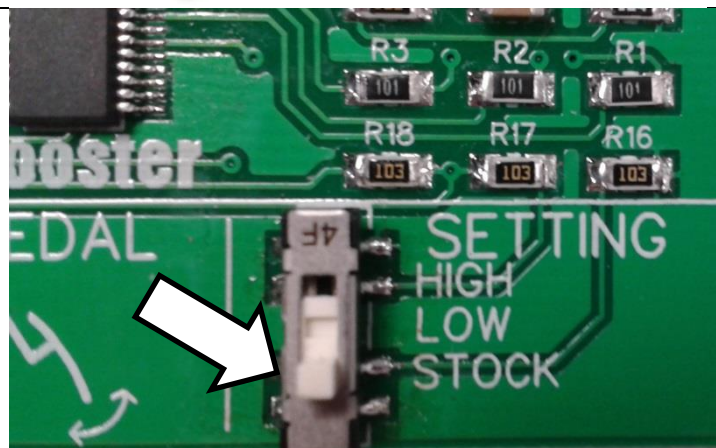


Before mounting the module, open it by inserting a screwdriver to depress the tabs and slide the PCB from the enclosure.



Connect the circuit board to the wiring harness and keep away from metal objects that could cause a short circuit.

Ensure the sensitivity **SETTING** switch is set to the default position of **STOCK** and **DO NOT** plug in the push button switch at this time. You may leave this switch in the **STOCK** position since this



BD Engine Brake Inc.

Plant Address: 33541 MacLure Rd. Abbotsford, BC, Canada V2S 7W2

U.S. Shipping Address: 1124 Fir Avenue, Blaine, WA 98230 U.S. Mailing Address: P.O. Box 231, Sumas, WA 98295

Phone: 604-853-6096 | Fax: 604-853-8749 | Internet: www.bddiesel.com

kit comes with the external push button.

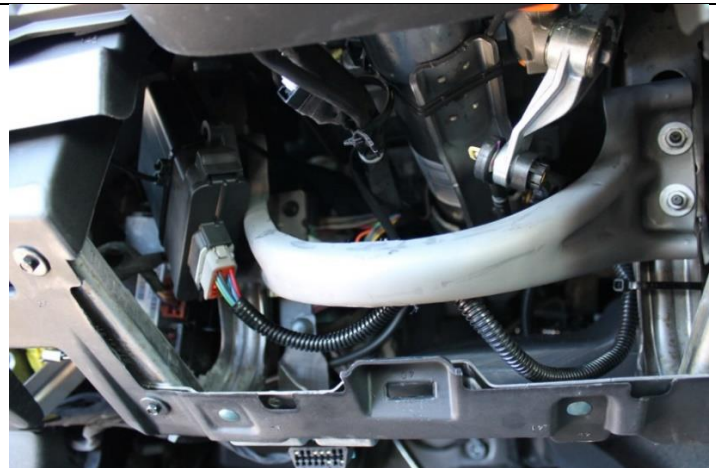
Turn the ignition switch on to **RUN** or **ON** but do not start the engine.

Press and release the **LEARN PEDAL** button on the module, the **STATUS** and **LEVEL** indicator lights will both go on solid. Slowly press and release the throttle pedal a few times within 15 seconds. This will allow the module to learn your specific accelerator pedal sensor output. Make sure pedal travel is not impeded by a floor mat.

The **STATUS** and **LEVEL** indicators will go back to normal operation and you can now turn the ignition back off. Your accelerator pedal voltages are now stored in the module's memory.

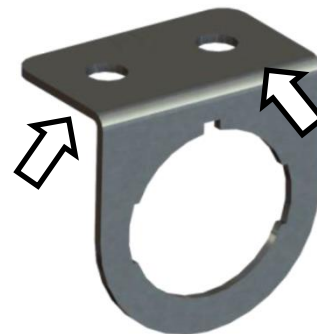


Insert the module back into the cover and secure it under the dash, out of the way with tie wraps.



Installation with the switch bracket

Install the switch bracket to the bottom of the dashboard using the two supplied self-tapping screws or the double-sided tape.

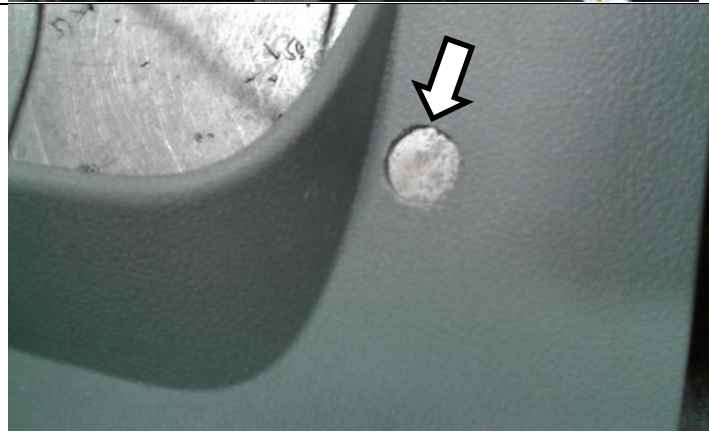


Installation through the dashboard

Choose a location in the dashboard with sufficient clearance behind it for the switch and wiring to fit. Ensure nothing will be damaged when drilling in this location.



Use a stepper drill bit to create a hole to fit the switch, use a file to create notch at the top of the hole for the switch locating tab. Use the button bracket as a template.



Apply the “Throttle Sensitivity” decal to the switch bracket or dashboard and then install the switch through the hole.



Connect the button **ONLY AFTER** the module has been learned to the vehicle. Use tie wraps to support the switch wire and keep it well clear of the pedals or other moving parts. Reinstall the knee bolster or any other parts removed for installation.



BD Engine Brake Inc.

Plant Address: 33541 MacLure Rd. Abbotsford, BC, Canada V2S 7W2

U.S. Shipping Address: 1124 Fir Avenue, Blaine, WA 98230 U.S. Mailing Address: P.O. Box 231, Sumas, WA 98295

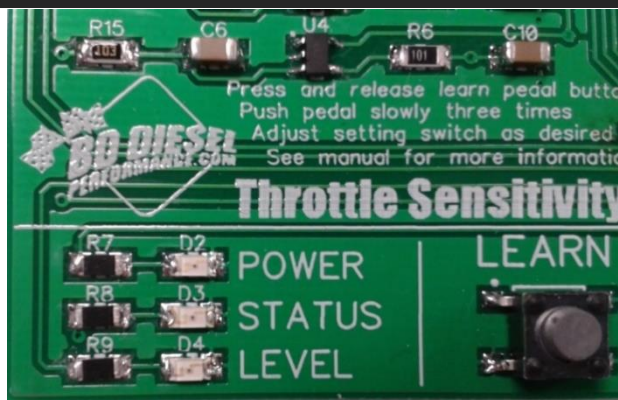
Phone: 604-853-6096 | Fax: 604-853-8749 | Internet: www.bddiesel.com

No Push Button – Module internal switch		
STOCK	0%	No flashes
LOW	+50%	1
HIGH	+100%	2

Push Button Attached – Overrides internal switch		
Off (STOCK)	0%	No flashes
Level 1 (LOW)	+50%	1 flash
Level 2	+75%	2 flashes
Level 3 (HIGH)	+100%	3 flashes
Ludicrous	+400%	4 flashes
Valet Mode	Minus 50%	5 flashes

Troubleshooting

POWER	Lit whenever the module has power (key on)
STATUS	Flashes when it detects APPS circuits 1 and 2 are over zero volts
LEVEL	This is the sensitivity level, stays off when set to STOCK
Note: All three lights will be lit during the 15 second pedal learn process	



Vehicle Sets Codes for Multiple APPS circuits	Check that the module is powered by removing the cover and checking for the POWER lamp. This should be lit whenever the ignition is on (late model vehicles will remain on for several minutes after the key is removed). Check the STATUS lamp is flashing; this will flash to indicate the module has detected the accelerator pedal sensor.
	If the Throttle Sensitivity Booster is being used before the module is correctly learned to a pedal it may set codes. If in doubt, relearn the module to the pedal. Refer to installation instructions for details.
	Ensure the connectors are fully seated. Some connectors are harder to mate together than others, ensure they do not come apart if tugged on. (Kit 1057831 in particular).
Sensitivity Setting has no Effect	If the module detects a failure in the APPS pedal it will not boost the sensitivity for safety. Check for an APPS fault code.
	If the module has not been properly learned for the pedal it will not boost sensitivity. Refer to installation step 7 for instruction on learning the module to your APPS pedal.