



## LLY High Flow Intake & Flow Fuel Line Upgrade Kit

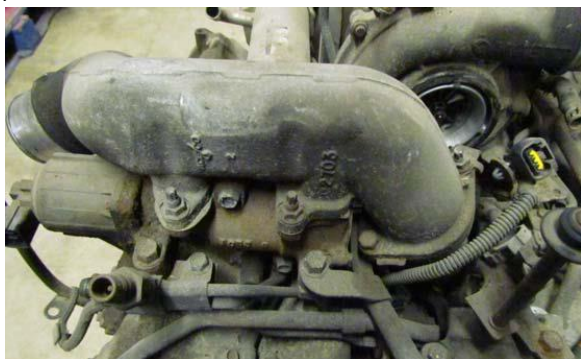
(For Off Road Use Only)



**Step 1:** Disconnect main power cable from battery. Remove the intake tube and silencer as shown in photo above.



**Step 2:** Remove Hot/Cold side innercooler tubes. Remove plastic turbocharger mouthpiece as shown.



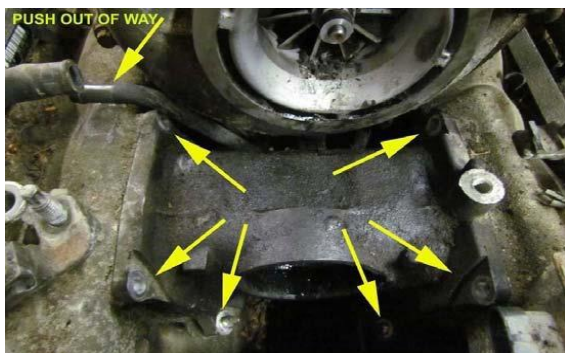
**Step 3:** Remove cast aluminum intake manifold.



**Step 4:** Unplug EGR connector as shown. & remove EGR cooler assembly. 3 fasteners in the front.



**Step 5:** Remove 4 fasteners as shown in rear of EGR cooler. When assembly is free, pry off hoses and remove.



**Step 6:** Remove 4 upper bolts and 4 lower nuts as shown. Use swivel socket with extension to remove left, rear nut. Push rear tube out of the way to facilitate removal of rear bolt & Y-bridge. Keep intake runner gaskets as they will be reused.



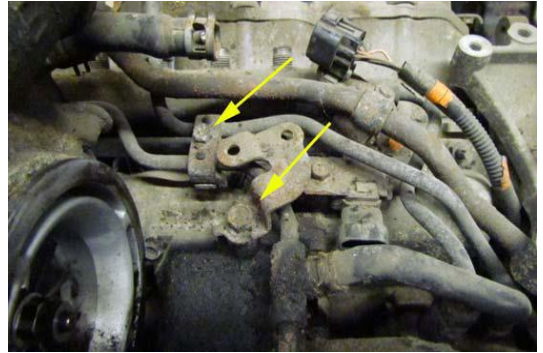


## LLY High Flow Intake & Flow Fuel Line Upgrade Kit

(For Off Road Use Only)



**Step 7:** Remove stock fuel manifold and all hoses connected to it.



**Step 8:** Remove fuel line brackets as shown above



**Step 9:** Cut fuel line as shown using hack saw or similar device.



**Step 10:** Cut end should be similar to above. While not necessary, it is recommend to use flair tool to form end as shown.



**Step 11:** Remove thermostat coolant pipe as shown. Pry out with pry bar.



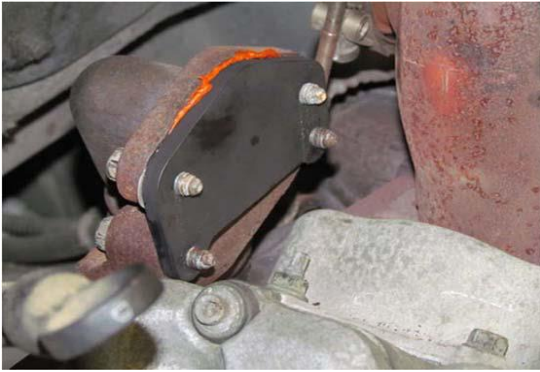
**Step 12:** Cut coolant pipe as shown and reinstall.





## LLY High Flow Intake & Flow Fuel Line Upgrade Kit

(For Off Road Use Only)



**Step 13:** Reuse stock gasket and install support plate. We recommend using hi-temp RTV in addition to stock gasket. When not using a different up-pipe, we have an up-pipe support plate (shown) that will cap the up-pipe EGR riser.



**Step 14:** Install Y-bridge, reusing stock intake runner gaskets. We recommend using some white lithium grease on the gaskets before reinstallation.



**Step 15a:** Vertical Fuel block installation. This is the preferred mounting if using test port.



**Step 15b:** Inverted fuel block installation image. Optional mounting if test port is not used.



**Step 16:** Route and connect small fuel return line hose as shown.



**Step 17:** Connect fuel line from FICM to fuel block and route feed line to CP3 pump.

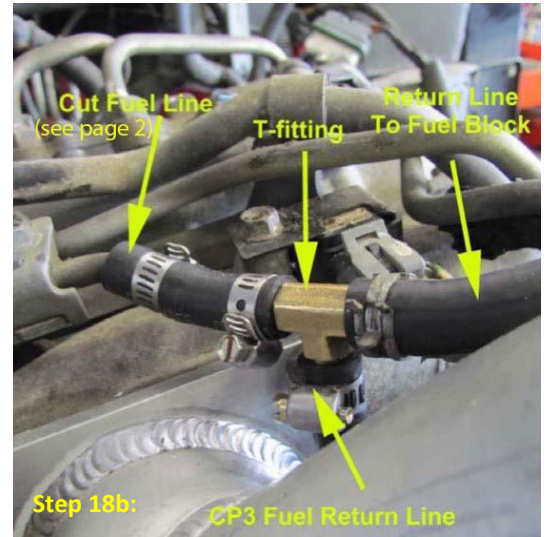


## LLY High Flow Intake & Flow Fuel Line Upgrade Kit

(For Off Road Use Only)



**Step 18a:** Connect T-Fitting to fuel return lines. Detailed routing is shown on right.



**Step 18b:**



**Step 19:** Attach coolant return line to modified coolant pipe as shown. This coolant line will route directly to firewall.



**Step 20:** Reassemble cold and hot side intercooler tubes, air intake assembly in reverse order.